

CONTESTANT ID# _____

Time _____

Rank _____

NETWORK ADMINISTRATION USING MICROSOFT (42)

REGIONAL 2013

TOTAL POINTS _____ (500)

Failure to adhere to any of the following rules will result in disqualification:

- 1. Contestant must hand in this test booklet and all printouts. Failure to do so will result in disqualification.***
- 2. No equipment, supplies, or materials other than those specified for this event are allowed in the testing area. No previous BPA tests and/or sample tests or facsimile (handwritten, photocopied, or keyed) are allowed in the testing area.***
- 3. Electronic devices will be monitored according to ACT standards.***

Property of Business Professionals of America.
May be reproduced only for use in the Business Professionals of America
Workplace Skills Assessment Program competition.

- 1) You are a new helpdesk trainee at WestOrange. You have been assigned the task to deploy a new application to the marketing department. The new application is delivered as an .msi file. You plan to install the application by using the Msiexec.exe program and you need to ensure that the installation process does not display a user interface.

What should you do?

- a) Manually perform a passive installation of the application.
 - b) Manually perform a quiet installation of the application.
 - c) Use a logon script, to run the Msiexec.exe program.
 - d) Use the Runas utility to run the Msiexec.exe program.
- 2) Windows XP supports how many simultaneous network connections?
- a) 4
 - b) 6
 - c) 8
 - d) 10
- 3) You are a help desk technician for cs.com. Stefan and Irene are employees at the software development department at cs.com. Stefan is developing a Web application on his Windows XP Professional computer named Stefan123. When Irene tries to access the new application, she cannot access the Web application by typing http://Stefan132 in the address bar of her Web browser. She can access other resources on the company network.

When you run the Ping command from your computer, you cannot connect to Stephan's computer. When you attempt to access http://Stefan132 from your computer, Internet Explorer displays "DNS or Server error."

You need to ensure that Irene can access the Web application on Stefan's computer. First, you establish a Remote Assistance connection to Stefan's computer.

What should you do next on Stefan's computer?

- a) Run the IPCONFIG/renew command.
- b) Stop and then restart the World Wide Web Publishing service.
- c) Ensure that the Everyone group Allow Full Control permission on the Inetpub folder.
- d) In the properties of the Local Area Connection connection, clear the Internet Connection Firewall Check box.

- 4) You are the network administrator. The network consists of a single Active Directory domain named CS.com. All network servers run Windows Server 2003. Confidential files are stored on a member server named CS-S1. The computer object for CS-S1 resides in an organizational unit (OU) named Confidential. A Group Policy object (GPO) named GPO1 is linked to the Confidential OU.**

To audit access to the confidential files, you enable auditing on all private folders on CS-S1. Several days later, you review the audit logs. You discover that auditing is not successful.

You need to ensure that auditing occurs successfully.

What should you do?

- a) Start the System Event Notification Service (SENS) on CS-S1.
- b) Start the Error Reporting service on CS-S1.
- c) Modify the Default Domain Controllers GPO by selecting Success and Failure as the Audit Object Access setting.
- d) Modify GPO1 by selecting Success and Failure as the Audit Object Access setting.

- 5) You are a help desk technician for CrazyStuff.com. An employee named Sandra calls you with a request. She needs to make the file \\Mfiles01\Plans\MarketingPlan.doc available on her portable Windows XP Professional computer when she is out of office. You verify that she has permission to make the file available offline. However, when You Right click the file on Sandra's computer, the menu option labeled Make available offline is not visible.**

You need to ensure that this file is made available offline. What should you do?

- a) Instruct Sandra to map a network drive to the \\Mfiles\Plans folder. Property of Business Professionals of America.

- b) Instruct Sandra to move the MarketingPlan.doc file from the \\Mfiles01\Plans folder to a shared folder that is formatted as NTFS.
- c) Ask a network administrator to modify the permissions on the MarketingPlan.doc file to grant Sandra Allow Read & Execute permission.
- d) Ask a network administrator to open the properties of the Plans shared folder and ensure that the Allow caching of files in this shared folder check box is selected.

6) How many layers are in the OSI Reference Model?

- a) 3
- b) 6
- c) 7
- d) 8

7) You are a help desk administrator for CrazyStuff, Inc. Eric, an employee in the marketing department, uses a Windows XP Professional computer.

Eric, an employee in the marketing department, often works with a file named Plan.xls on his Windows XP Professional computer. The Plan.xls file is stored in a folder named \\MktFiles\Plans. Eric reports, that initially, he could work with the file when he was out of the office and offline, without copying it to his local hard disk but nowadays he can't open the file when he is out of the office.

You need to ensure that Eric can always access Plan.Xis when he is out of office and offline.

What should you do?

- a) Instruct Eric to increase the amount of hard disk space used for offline files on his computer.
- b) Instruct Eric to right click the \\MktFiles\Plans\Plan.xls file and select Make available offline from the context menu.
- c) Instruct Eric to open Windows explorer, select Folder Options from the Tools menu, and select the Enable offline files check box on the Offline Files tab.
- d) Instruct Eric to open Windows Explorer, select Folder Options from the Tools menu, and select the Synchronize all offline files before logging off check box on the Offline Files tab.

8) Which command-line utility allows you to view current incoming and outgoing network connections?

Property of Business Professionals of America.

May be reproduced only for use in the Business Professionals of America Workplace Skills Assessment Program competition.

- a) NETSTAT
- b) PING
- c) IPCONFIG
- d) ROUTE

9) What feature of Microsoft Windows Server 2003 assigns IP address to computers on a domain?

- a) DHCP
- b) DNS
- c) Active Directory
- d) IIS

10) You administer the internal Web site. The Web site contains a page that lists the Web development projects in progress with links to each of the virtual directories that are hosted on the Web server. You manage the default Web site through Microsoft FrontPage. All Web developers control the permissions on their own NTFS folders and virtual directories.

Occasionally, users report that the permissions on their folders and virtual directories are reset to the default values. After troubleshooting this issue for some time you find out that this occurs whenever you update the default Web site.

What should you do to resolve this problem?

- a) In the default Web site's properties, on the Server Extensions tab, select the Manage permissions manually check box.
- b) Change the NTFS permissions on the default Web site to only Allow Read and Allow Write.
- c) Change the IIS permissions on the default Web site to only Read.
- d) In the properties for each virtual directory, set the Execute Permissions option to scripts only.

11) You are the senior desktop administrator for Fruit Palace. You get a phone call from one of your Trainees, who is performing a clean installation of Windows XP Professional on a computer that currently runs Windows 98. He states that the text based portion of Setup finished successfully. Before the GUI based portion of Setup starts, the computer stopped responding. He investigated and discovered that there is a problem with a device driver. You want to know which device is causing the problem. What should you tell him to do?

- a) Modify the Boot.ini file to include the /fastdetect switch.
- b) Modify the Boot.ini file to include the /sos switch.
- c) Restart Setup by using the /dudisable switch.
- d) Restart Setup by using the /dushare switch.

12) You are a helpdesk technician at BingBong.com. You get a call from a graphics designer named Pierre, who has installed a new application and an updated video driver on his Windows XP Professional computer.

After the installation, Pierre restarted his computer and logged on. However, when he moves Windows and dialog boxes, the display is distorted. You need to ensure that Pierre can run his other applications without video distortion while you look for the correct video driver for the new application.

What should you do?

- a) Use Device Manager to roll back the video driver.
- b) Restart the computer with the last known good configuration.
- c) Run the Msconfig utility, and select the /BASEVIDEO check box.
- d) Use the Add Hardware Wizard to scan for new hardware. Install any found hardware.

13) You are the network administrator. The network consists of a single Active Directory domain named demo.com and a single subnet. All servers run Windows Server 2003. The network contains 150 client computers and 16 servers. All computers on the network use the 10.10.0.0/16 address scheme.

Bill, your manager, instructs you to place the 16 servers into a separate subnet that uses the 192.168.10.0 public addressing scheme. You must plan for a maximum of 30 servers in the future. You need to configure a new subnet mask. The subnet mask must allow a sufficient number of IP addresses for the existing servers and future growth. However, you want to conserve addresses as much as possible.

Which subnet mask should you use?

- a) 255.255.255.224
- b) 255.255.255.240
- c) 255.255.255.248

Property of Business Professionals of America.

May be reproduced only for use in the Business Professionals of America Workplace Skills Assessment Program competition.

d) 255.255.255.252

14) You and Stephan are helpdesk technicians for Help4U.com. You install a printer on your Windows XP Professional computer in your office and share it on the company network. You want to ensure that only members of the HelpDesk local group can use this printer and the users should only be able to manage only their own print jobs. But still you and Stephan should be able to manage the printer and all print jobs.

How should you configure security on this printer?

- a) Grant Allow Print permission to the HelpDesk group. Grant Allow Manage Documents permission to your user account and to Stephan's user account.
- b) Grant Allow Print permission to the HelpDesk group. Grant Allow Manage Documents and Allow Manage Printers permissions to your user account and to Stephan's user account.
- c) Grant Allow Manage Documents permission to the HelpDesk group. Grant Allow Manage Printers permission to your user account and to Stephan's user account.
- d) Grant Allow Print permission to the HelpDesk group. Remove Allow Manage Documents permission from the Creator Owner group. Grant Allow Manage Printers permission to your user account and to Stephan's user account.

15) Integrating service packs and updates to the Windows installation files is known as _____?

- a) Slipstreaming
- b) Integration
- c) Combining
- d) Execution

16) You manage a network for a small company that is on a workgroup. Users are complaining that they have to wait a long time for their print jobs to finish. You decide to configure a print server using Windows XP Pro and attach a local printer to the computer. You share the printer and add it to each of the workstations. How many users will be able to connect to the printer simultaneously?

- a) 4
- b) 6
- c) 10
- d) Unlimited

17) What is the default IP address of the loopback adapter on a Windows XP workstation?

- a) 127.0.0.1
- b) 192.168.1.1
- c) 111.111.111.111
- d) 0.0.0.0

18) You are unable to connect to any resources on your company network so you open up a command prompt and type ipconfig. Your workstation indicates that it has an IP address of 169.254.10.1.

What does this mean?

- a) The DHCP server is down.
- b) The network card has been disabled.
- c) Drive C: was converted to FAT32.
- d) This IP address is normal.

19) What is the default port used by http?

- a) 21
- b) 80
- c) 110
- d) 443

20) You are the desktop administrator. You are assigned the task to upgrade all computers from Windows 2000 Professional to Windows XP Professional. No problems are reported once the upgrade of all computers is completed.

You buy a new computer that will be assigned to a new employee. The hardware of the new computer is configured to be identical to all other client computer in the company. The user chooses to install Windows XP Professional without any help from you. He installs from a network installation point. The user now reports that he cannot change his Display settings to anything other than 640 x 480 resolution with 16 color.

You verify that this computer has the same video hardware as all the other client computers. You also notice that the hardware vendor does not currently offer a video driver for Windows XP Professional.

You need to enable the user to change his Display settings to higher resolution and color quality.

What should you do?

- a) Reboot the computer in safe mode and select the standard VGA video driver.
- b) Install the Windows 2000 Professional version of the video drivers on the computer.
- c) On the Monitor tab in the Advanced Display settings, specify the correct driver for the monitor.
- d) On the Color Management tab in the Advanced Display settings, specify the appropriate color profile for the monitor.

21) You administer a Windows XP network that is not on a domain. You are concerned that users may attempt to install device drivers that have not been digitally signed by Microsoft. Which driver signing option will you choose? You do not want them to install unsigned drivers.

- a) Block
- b) Warn
- c) Deny
- d) Allow

22)What is the subnet mask 11111111.11111111.0.0 in decimal notation?

- a) 255.0.0.0
- b) 255.255.0.0
- c) 255.255.255.0
- d) 255.255.255.255

23)You are the network administrator. A Windows Server 2003 computer is configured as a print server for a print device that has a built-in network interface. Users of the print device report that they cannot print to it. You confirm that the correct IP address and drivers are being used.

You suspect that there is a problem with the MAC to IP address resolution on the print server. You want to find out which MAC address the print jobs are being sent to.

Which command should you run on the print server?

- a) net session
- b) netstat.exe
- c) netsh.exe
- d) netcap.exe

24)You are auditing a Windows XP Professional workstation for failed object access. Auditing is configured on the folder but the event is not showing up in the appropriate log file. What is most likely the cause of this problem?

- a) Auditing is not configured in the local security policy.
- b) The computer is formatted with the FAT32 file system.
- c) The event viewer is not installed.
- d) Disk quotas are not configured properly.

25)You are the senior helpdesk technician for CrazyShopper. You install a new printer that is connected to your Windows XP Professional computer and share this printer to the other users in the helpdesk. When you for the first time try to print to this printer, the output is several pages of unreadable characters and it seems that the other users are experiencing similar results.

You need to ensure that the appropriate users can successfully print to this printer.

What should you do?

- a) Configure the printer to print directly to the print device. Instruct the other users to make the same configuration.
- b) Configure the printer to use the WinPrint print processor and to use RAW as the default data type.
- c) Configure the printer to hold mismatched documents. Disable the advanced printing features.
- d) Run the AddPrinter Driver Wizard to install the correct printer driver on your computer. Instruct the other users to disconnect and then reconnect to your shared printer.

26)What program is included with Windows XP Pro and Windows Server 2003 that can be used to host and manage a website?

- a) IIS
- b) DHCP
- c) DNS
- d) WINS

27)What is the default port used by https

- a) 21
- b) 80
- c) 110
- d) 443.

28)Sandy is an accountant at your company. Sandy has Read and Execute permissions to the sales folder. Sandy is also a member of the accountants group that has the Modify permission to the sales folder. What effect does denying Sandy's individual user account permission to the folder have?

- a) None
- b) She still has the Read and Execute permission
- c) She is denied permission to the folder
- d) She now has full control

29)What must be identical on a Windows XP Professional workstation to support printer pooling?

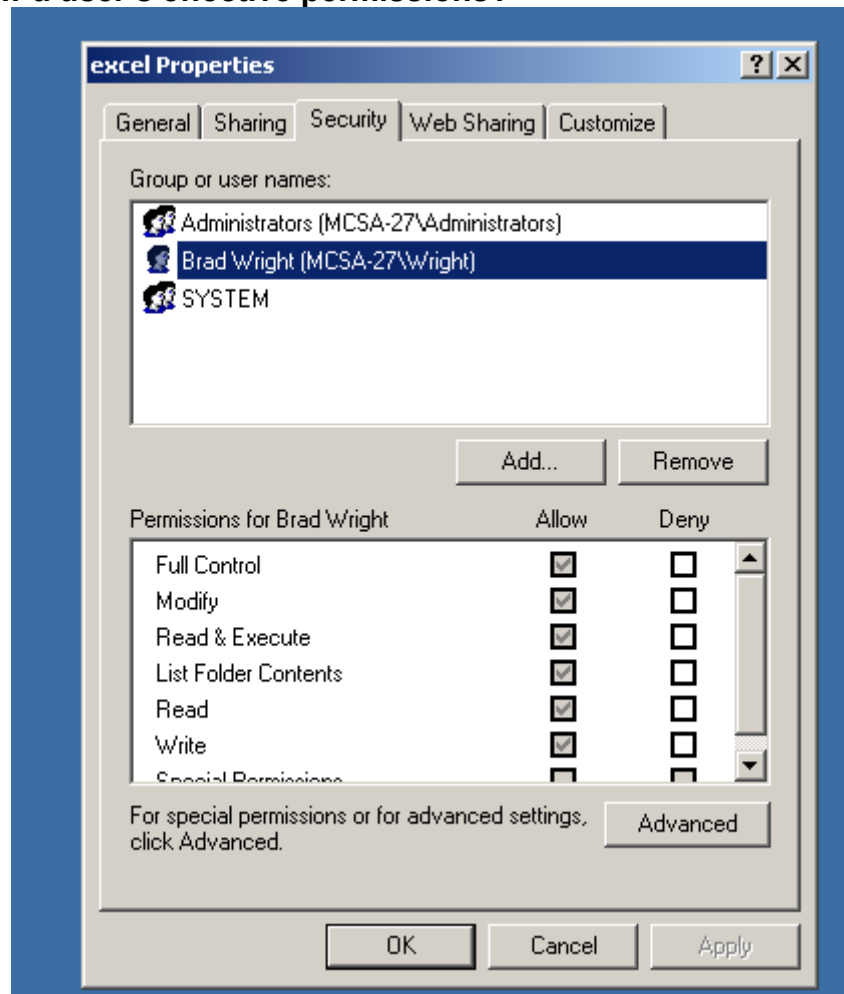
Property of Business Professionals of America.
May be reproduced only for use in the Business Professionals of America
Workplace Skills Assessment Program competition.

- a) The printers
- b) The printer cables
- c) The network cards
- d) The hard drives

30) What is the default subnet mask for the IP address 10.97.2.6?

- a) 255.255.0.0
- b) 255.255.255.255
- c) 255.255.255.0
- d) 255.0.0.0

31) Using the screen capture from below, where would you select to view a user's effective permissions?



- a) The Sharing tab
- b) The Customize tab
- c) The Advanced button

d) The Remove button

32) You are senior helpdesk technician at Crazy Stuff, Inc. Crazy Stuff developed a custom database application that they use to track sales information. The database application saves its data in files with a .dta file extension in the same shared folder that contains several shared Microsoft Word 2002 documents.

Your manager reports that the application's .dta files are becoming corrupted from time to time and each time the files are corrupted, they must be restored from a tape backup, which is a time consuming process. Users with portable computers often want to have the Word 2002 documents in the shared folder available offline, and you discover that several users also select the .dta files to be made available offline. You suspect that this is the reason the .dta files become corrupted.

You need to ensure that users cannot make the .dta files available offline.

Your solution must not affect user access to the other files in the folder.

What should you do?

- a) Use Remote Assistance to disable offline files on the local computer policy of all portable computers.
- b) Modify the file share that contains the .dta files, and disable offline file caching.
- c) Ask a network administrator to modify the file permissions on the .dta files to assign all users the Deny Change permission.
- d) As a network administrator to modify domain security policy to add the .dta file type to the Files not cached domain group policy.

33) You are the senior helpdesk technician for CrazyShopper, Inc. You assign the task, to install Windows XP Professional to all Windows 98 computers in the company, to some of the new technicians in the helpdesk.

Andrew is a user in the graphics department who often work with very large graphics and desktop publishing files. He wants to be able to save his files locally in a folder named C:\GFX. However, Andrew does not have enough free space on the drive.

**You install a new hard disk on Andrew's computer and create an
Property of Business Professionals of America.**

NTFS volume named NewVolume. You attempt to mount NewVolume to the GFX folder. However, the option to mount the volume to a folder is unavailable.

You need to be able to mount the volume to the GFX folder.

Which command should you run on Andrew's computer?

- a) Convert c:/fs:ntfs
- b) Convert c:/V/NoSecurity
- c) Fsutil objected create NewVolume c:\GFX
- d) Fsutil hardlink create c:\GFXNewVolume

34) You have set up a new Windows XP Professional computer for personal use at home. As the computer always will be connected to the Internet via an ADSL modem you decide to enable the Internet Connection Firewall on the ADSL connection.

After several days, you notice that the computer is running slower than normal and you examine the Internet Connection Firewall on your home computer. A small portion of the firewall log file is shown here:

```
2001 10 25 15:28:36 CLOSE TCP 172.30.23.1 172.30.23.103 3738 80
2001 10 25 15:28:36 CLOSE TCP 172.30.23.104 172.30.23.103 1076 80
2001 10 25 15:28:53 OPEN INBOUND TCP 172.30.23.104 172.30.23.103 1077 80
```

How should you configure the Internet Connection Firewall to prevent the activity shown in the log?

- a) Clear the Telnet Server check box on the Services tab.
- b) Clear the Allow incoming echo requests on the ICMP tab.
- c) Clear the Web server (HTTP) check box on the Services tab.
- d) Clear the Internet Mail Server (SMTP) check box on the Services tab.

35) You are a help desk technician for BigGreen.com All computers are installed with Windows XP Professional and connected to the company network. The company network is connected to the Internet via a T1 line. Your computer hosts a Web site that is accessed by other help desk technicians.

You set up a new Windows XP Professional computer at home. The home computer is connected to the Internet via a cable modem that
Property of Business Professionals of America.

is always on. You are assigned a static IP address from your ISP (Internet Service Provider).

You wish to be able to control your home computer from your office by using remote desktop. However, you want to prevent any other Internet traffic from reaching the home computer. You verify that your company's Internet firewall permits remote desktop connection traffic.

Which two actions should you take? (Each Answer: presents part of the solution. (Choose two)

- 1) On your office computer, enable the Internet connection firewall.
- 2) On your office computer, enable Internet connection sharing.
- 3) On your home computer, enable Internet connection sharing.
- 4) On your home computer, enable the Internet connection firewall.
- 5) On your home computer, enable the Remote Desktop Option in the Internet connection firewall services.
- 6) On your home computer, enable the web Server (HTTP) option in the Internet connection firewall service.

A) 1,3	B) 2,6
C) 4,5	E) 6,4

36) Which of the following is not an NTFS folder permission on a Windows XP Professional workstation?

- a) Read
- b) Write
- c) Delete
- d) Modify

37) You are the network administrator for at the Mumbai office of yummytacos.com. The network contains a Windows Server 2003 computer named BeefSupreme1.

BeefSupreme1 is a critical file server. BeefSupreme1 is configured with a DHCP client reservation. Users can successfully download FTP documents from BeefSupreme1.

The DHCP server fails. Users report that they cannot access resources on BeefSupreme1.

You want to configure BeefSupreme1 so that it is available even if it is unable to obtain or renew a lease from the DHCP server.

What are two possible ways to achieve this goal? (Each correct answer presents a complete solution. Choose two.)

- 1) Configure a static IP address.
- 2) On the Alternate Configuration tab of the Internet Protocol (TCP/IP) properties, configure IP settings.
- 3) Configure the DHCP scope in the 169.254.0.1. - 169.254.255.254 range.
- 4) On the DHCP server, configure the DHCP 001 Resource Location Servers reservation option for BeefSupreme1.

- A) 1,4 B) 1,2
C) 2,4 D) 2,3

38)When configuring disk quotas, what effect do compressed files and folders have on maintaining a disk quota?

- a) Windows XP Professional uses the compressed value when calculating disk quotas.
- b) You cannot compress files when disk quotas are implemented.
- c) Windows XP will use the uncompressed value of a file when disk quotas are enabled.
- d) When configuring disk quotas you have the option of enabling compression on the Disk Quotas tab.

39)Which NTFS folder permission will allow you to delete folders?

- a) Read
- b) Write
- c) Modify
- d) Read and Execute

40)You need to be able to connect to a shared folder named Accounting on Server1 on your domain. What is the correct UNC path to the Accounting folder?

- a) \\accounting-server1
- b) \\server1\accounting
- c) http://accounting
- d) \\server1\

41)What is the default share permission when you share a folder on a Windows XP operating system?

- a) Administrator-Full Control
- b) Everyone-Read
- c) Everyone Write

Property of Business Professionals of America.

May be reproduced only for use in the Business Professionals of America Workplace Skills Assessment Program competition.

d) Everyone-Deny

42)Which Windows file system allows for encryption, compression, and file and folder level security?

- a) FAT
- b) FAT32
- c) EXT3
- d) NTFS

43)What is the minimum amount of memory required for a Windows XP installation

- a) 64 MB
- b) 128 MB
- c) 2 GB
- d) 4 GB

44)You suspect that a user has been making unauthorized access to files on another computer on the domain. What would you most likely audit to track this unauthorized access?

- a) Account Management
- b) Logon Events
- c) Object Access
- d) Privilege Use

45)If you are given the network address of 172.16.0.0 and you are asked to create 9 subnets what would the subnet mask be?

- a) 255.255.0.0
- b) 255.255.255.0
- c) 255.25.224.0
- d) 255.255.240.0

46)An employee of a company that is not on a domain needs to be able to share files and folders. What group should you make that user a member of without giving them too many privileges?

- a) Administrator
- b) Domain Users
- c) Guest
- d) Power Users

47)What Windows tool allows you to prepare a Windows XP Professional operating system for imaging?

- a) Setupmanager
- b) Sysprep
- c) UDF
- d) Checkupgradeonly

48)You install a new driver for the network interface card (NIC) on your Windows XP Professional home computer. When you restart the computer, the monitor displays a STOP error with no text before you are able to log on. Every time you restart the computer, a STOP error halts the start process. You need to correct the error without affecting the user data on the computer. You also need to restore the original network adapter driver.

What should you do?

- a) Restart the computer with the last known good configuration.
- b) Restart the computer by using the Recovery console, and stop the Network Connections service.
- c) Restart the computer by using a Windows XP Professional CD, and select the option to perform an Automated System Recovery (ASR) restore when prompted.
- d) Restart the computer by using a Windows XP Professional bootable floppy disk, and disable the network adapter. Restart the client computer, and enable the network adapter.

49) You are the network administrator. The network consists of a single Active Directory domain named CS.com. All network servers run Windows Server 2003. Three thousand client computers run Windows 2000 Professional, and 1,500 client computers run Windows XP Professional.

A new employee named Beth is hired to assist you in installing Windows XP Professional on 150 new client computers.

You need to ensure that Beth has only the minimum permissions required to add new computer accounts to the domain and to own the accounts that he creates. Beth must not be able to delete computer accounts.

What should you do?

- a) Add Beth's user account to the Server Operators group.
- b) Add Beth's user account to the Account Operators group.
- c) Use the Delegation of Control Wizard to permit Beth's user account to create new computer objects in the Computers container.
- d) Create a Group Policy object (GPO) and link it to the domain. Configure the GPO to permit Beth's user account to add client computers to the domain.

50) Two users in the marketing department need to be able to share files and folders with one another. You need to give them the ability to do this with the least amount of administrative effort and without giving them too many privileges. What will you do?

- a) Add each user to the Power Users Group on their respective workstation.
- b) Give each member a Guest account login.
- c) Add each user to the Administrators group.
- d) Reinstall Users and Groups with the Admin Privilege.